



CORE COMPETENCIES

Kompli provides the following vital commercial insurance and risk management compliance advisory solutions:

- Commercial property, casualty, life, accident and health insurance *including*: cyber insurance, professional liability, contractors pollution liability (CPL), surety bonding, employee benefits, captive and a user friendly CPL insurance on-line quoting system
- Construction wrap ups or controlled Insurance program (EX: OCIP, CCIP)
- Enhance and improve a businesses commercial insurance, OSHA, HR or DOT supply chain management (SCM) system
- Workers compensation insurance EMR factor reduction
- Insurance audit dispute
- Environmental health, safety (EHS) /OSHA loss prevention
- Insurance claims advocacy
- Contractual insurance obligation and risk transfer review and advisement (outsourced legal assistance available upon request)

VALUE

- Helps your tiered subs and vendors keep safety numbers in the acceptable range
- Partners with best risk management compliance providers to meet our clients' specific needs
- 25 years commercial insurance & risk management compliance experience!
- Helps you meet your supplier diversity goals



DIFFERENTIATORS

- Partnering with our clients and vendors as an added value resource
- Providing the best workers comp. EMR cost reduction system to reduce and maintain the factor to be at or below 1.000
- Helping tier subs and vendors to be compliant during the compliance audit process
- Working with the nations top ranked commercial insurance and surety bonding firms

INDUSTRIES SERVED

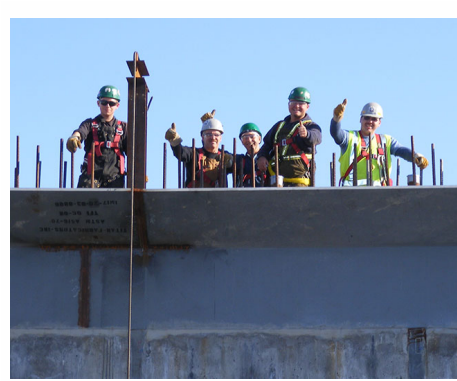
Prime and general contractors and tiered subs
 Government procurements
 Corporate fortune 500
 Utility & Energy
 Commercial real estate & property management

CURRENT CLIENTS



REAL ESTATE

500 DELAWARE AVENUE, # 1075 | WILMINGTON, DELAWARE 19899 PH: 800.520.8135




DUNS: 045163822

CAGE CODE: 80C55

NAICS: 524298, 524126,
541612, 524210 541611,
541990, 541690

KRISTIN L. MARINELLI
PRESIDENT & CEO

 **KLM Consulting, LLC DBA Kompli**
800.520.8135

 kristi@klmcons.com



www.klmcons.com

*"Kristi goes above and beyond
 ..her work ethic is both
 inspiring and commendable."*

Kim McGinnis
East Coast Electric